

**INDRAPRASTHA POWER GENERATION COMPANY LIMITED**  
**&**  
**PRAGATI POWER CORPORATION LIMITED**  
**(GOVT. OF NCT OF DELHI UNDERTAKINGS)**  
**Himadri, Rajghat Power House Office Complex, New Delhi-110 002**

**Manual I**  
**Particulars of organization, functions and duties**  
**[Section 4(1)(b)(i)]**

1. **BRIEF PROFILE OF THE COMPANY**

Indraprastha Power Generation Co. Ltd. (IPGCL) was incorporated on 1<sup>st</sup> July,2002 and it took over the generation activities w.e.f. 1st July,2002 from erstwhile Delhi Vidyut Board after its unbundling into six successor companies. The main functions of IPGCL is generation of electricity and its total installed capacity is 994.5 MW including of Pragati Power Station. Its associate Company is Pragati Power Corporation Limited which was incorporated on 9<sup>th</sup> January, 2001.

Ø **Indraprastha Power Station**

First Unit of 36.6 MW at I.P. Station was commissioned in 1963 and was inaugurated by the first Prime Minister of India, late Pt. Jawaharlal Nehru. The Power Station was further expanded in 1967-68 with installation of three Units of 62.5 MW each; in 1971 one more Unit of 60 MW was commissioned. The first Unit of 36.6 MW retired by CEA in Feb.2000 and is under disposal. The present available capacity of this Station is 247.5 MW. It is a coal-based station, getting deshaled coal having ash content less than 34% from NCL, Bina.

Ø **Rajghat Power House**

Two Units of 67.5 MW were installed in 1989-90 at Rajghat power House as replacement of old units. The present generation capacity of this Station is 135 MW like I.P. Station. RPH is also coal based operating on deshaled coal from NCL, Bina..

Ø **Gas Turbine Power Station**

Six Gas Turbine Units of 30 MW each were commissioned in 1985-86 to cater to the power demand in peak hours. Initially this Station worked as peaking power station but due to growing power demand, it was converted into combined cycle gas turbine station with commissioning of Waste Heat Recovery Units in 1995-96. The total capacity of this Station is 282 MW. The gas supply has been tied up with GAIL through HBJ Pipeline. The APM gas allocation is not sufficient for full generation from the power station. Subsequently, with the availability of Regassified LNG, an agreement was made with GAIL for supply of R-LNG so that maximum generation could be achieved.

Ø **Pragati Power Station**

To bridge the gap between demand and supply and to give reliable supply to the capital City a 330 MW combined cycle Gas Turbine Power Project was set up on fast track basis. This plant consists of two gas based Units of 104 MW each and one Waste heat Recovery Unit of 122 MW. Gas supply has been tied up with GAIL through HBJ Pipeline. Due to paucity of water this plant was designed to operate on treated sewage water which is being supplied from Sen nursing Home and Delhi Gate Sewage Treatment plants.

**POWER STATIONS AT A GLANCE:-**

Station	Indraprastha Power Station	Rajghat Power Station	Gas Turbine Power Station	Pragati Power Station
Station Capacity (MW)	247.5	135	282	330
Units Capacity (MW)	3x62.5 + 60	2x67.5	6x30 (GT) + 3x34 (WHRU)	2x104 (GT) + 1x122 (WHRU)
Year of Commissioning	1967-71	1989-90	1985-86 & 1995-96	2002 -03
Coal Fields/Gas	NCL, BINA	NCL, BINA	GAIL, HBJ Pipeline	GAIL, HBJ Pipeline
Water Sources	River Yamuna	River Yamuna	River Yamuna	Treated water from Sen Nursing Home and Delhi Gate Sewage Treatment Plants
Beneficiary Areas	VIP- South & Central Delhi	Central & North Delhi	NDMC-VVIP, DMRC	NDMC, South Delhi

**2. AIMS & OBJECTIVES OF THE ORGANIZATION**

Aims and Objectives of the Organization may be seen at **Annexure-A**

**3. MISSION/ VISION**

**OUR VISION**

***“TO MAKE DELHI – POWER SURPLUS”***

**OUR MISSION**

- Ø To maximize generation from available capacity***
- Ø To plan & implement new generation capacity in Delhi***
- Ø Competitive pricing of our own generation***
- Ø To set ever so high standards of environment Protection.***
- Ø To develop competent human resources for managing the company with good standards.***

**4. ORGANIZATION CHART**

May be seen at **Annexure-B**

**5. POSTAL ADDRESS OF THE MAIN OFFICE, ATTACHED/SUBORDINATE OFFICE/FIELD UNITS ETC.**

<b>LOCATION</b>	<b>POSTAL ADDRESS</b>
Regd. & Corporate Office	Himadri, Rajghat Power House Office Complex, New Delhi-110002
Head Quarters	Rajghat Power House Office Complex, New Delhi-110002
Rajghat Power House	Rajghat Power House, IPGCL, New Delhi-110002
Indraprastha Power Station	Indraprastha Power Station, opposite WHO office, IP Estate, Ring Road, New Delhi-110002
Gas Turbine Power Station	Indraprastha Gas Turbine Power Station, opposite DTC head quarters, I.P.Estate, Ring Road, New Delhi – 110002
Pragati Power Station	Pragati Power Station, Pragati Power Corporation Limited, Ring Road, New Delhi-110002

## 6. MAP OF OFFICE LOCATION

Our Registered and Corporate Office is situated at-

**HIMADRI, RAJGHAT POWER HOUSE OFFICE COMPLEX,  
RAJGHAT, N.D.-110002**

## 7. LANDMARKS :-

### LANDMARKS

1905	First Diesel Power Station established in Delhi.
1911	Steam Generating Station set up in Delhi.
1932	Management of Central Power House handed over to NDMC.
1939	DCEPA Ltd. established.
1947	DESTC taken over by DCEPA Ltd.
1951	Delhi State Electricity Board formed.
1955	Purchase of Power From Nangal.
1958	Delhi Electric Supply Undertaking came into existence.
1959	Certain NDMC area taken over by DESU for electric supply.
1962	U.J.V.E. Supply Co. taken over by DESU.
1963	MES&T Corpn. Taken over by DESU.
1963	Unit # 1 of I.P. Station commissioned (36.6 MW).
1966	15 MW set installed at RPH.
1967	One Unit of 62.5 MW commissioned under I.P. Station extension project
1967	First 220KV S/Stn. Set up at I.P. Station.
1967	Pool operation of DESU & Bhakra System at 220KV Grid Station at I.P. Station started.
1968	All the three units (62.5MW each) at I.P. Station Extension project put on commercial use.
1971	Fifth unit of 60 MW commissioned at I.P. Station, 220 KV S/Stn. Set up at Narela.
1986	Six G.T. units of 30MW each at GTPS commissioned.
1989	Replacement units of 2X67.5MW at RPH commissioned.
1995	Three WHRUs of 34 MW each at GTPS commissioned.
24.02.1997	Delhi Vidyut Board came into existence.
10.06.2000	Foundation stone for 330 MW CCGT Pragati Power Project laid.
30.06.2002	Delhi Vidyut Board split in 6 companies namely : (1) BSES Rajdhani Power Ltd. (2) North Delhi Power Ltd. (3) BSES Yamuna Power Ltd. (4) Delhi Transco Ltd. (5) Indraprastha Power Generation Co. Ltd. (6) Delhi Power Co.Ltd.
01.07.2002	Indraprastha Power Generation Co. Ltd. And Pragati Power Corporation Ltd. Started taking independently under Govt. of NCT Delhi.
02.07.2002	GT No. 1(104MW) of Pragati Power Project on commercial operation.
03.12.2002	GT No. 2(104 MW) of Pragati Power Project put on commercial operation.
16.05.2003	STG of Pragati Power Project (122MW ) put on Commercial Operation.
06.06.2003	Pragati Power Station (330 MW) was dedicated to citizens of Delhi by Hon'ble Chief Minister Of Delhi.

**8. WORKING HOURS BOTH FOR OFFICE AND PUBLIC**

Working Hours

<b>LOCATION</b>	<b>WORKING HOURS</b>
CORPORATE OFFICE	9:30.A.M. – 6:00 P.M. (5 DAYS A WEEK)
OFFICES IN PLANTS*	9:30 A.M.- 5:00 P.M. (6 DAYS A WEEK) Second Saturday off

\* Our Plants are operational round the clock in Shifts.

Since IPGCL/PPCL is solely engaged in Power Generation activities, it does not have interaction with public in general.

**9. GRIEVANCE REDRESSAL MECHANISM**

Grievances of the employees are handled by Administration/Personnel Section. On receipt of any grievance, the matter is examined and the factual position is put up for consideration and decision by the Competent Authority.

FOLLOWS....

Ø **AIMS AND OBJECTIVES OF THE COMPANY – ANNEXURE-A**

Ø **ORGANIZATION CHART FOLLOWS – ANNEXURE-B**

**A Main Objects as per Memorandum of Association of Indraprastha Power Generation Company Limited (IPGCL):**

1. To acquire, establish, develop, construct, erect, lay, operate, run, maintain, enlarge, alter, renovate, modernize, work and use in the National Capital Territory of Delhi and elsewhere Electric Generating Stations, projects associated lines and all things connected thereto including power stations, distribution centres, cables, wires, lines, accumulators, plant, motors meters, apparatus, materials and things connected with the production, generation, use, storage, measurement, transmission, supply and distribution of the power.
2. To carry on the business of purchasing, importing, exporting, producing, trading, manufacturing including finalization of tariff. Billing and collection or of otherwise dealing in electric power and to coordinate, aid and advise on the activities of other generation of power, on all matters concerning the operation and maintenance of electric measurement, supply and distribution of power.
3. To study, investigate, collect information and data, review operations, plan, research, design, prepare feasibility reports, prepare project report, diagnose operational difficulties and weaknesses and advise on the remedial facilities and to undertake for and on behalf of others the setting up of electric power plants and generally work for the efficient and economic management of electric power and the optimum utilization of the resources available.

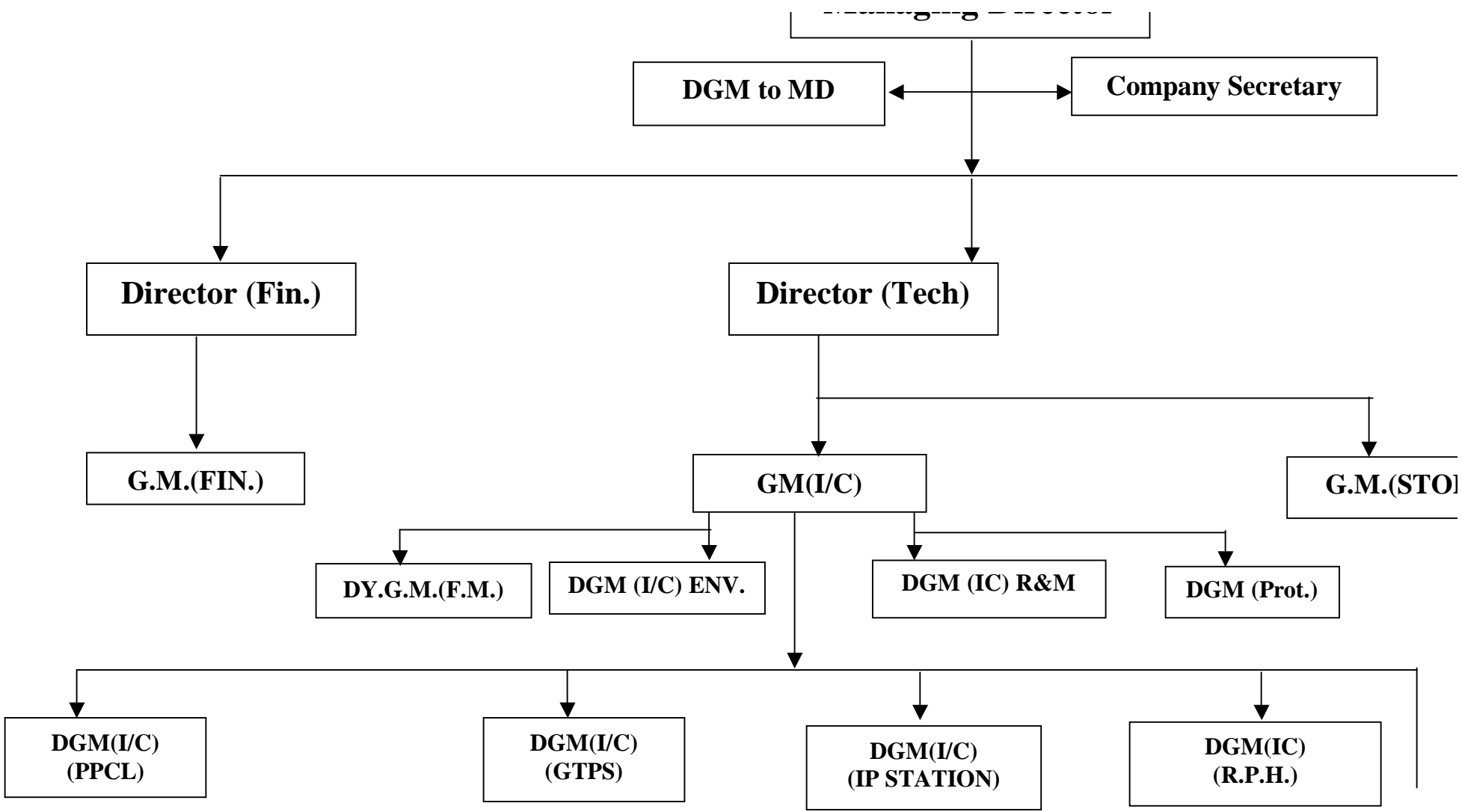
**B. Main objects as per Memorandum of Association of Pragati Power Corporation Limited (PPCL)**

1. (a) To plan, promote, develop, set up Power Plants / Projects for generation, transmission, supply and sale of Electricity using solid , liquid, gaseous or other form of fuel(s) or using any other form of energy input and organise an integrated and efficient development of electrical energy / associated systems in accordance with the National / State economic policies and objectives laid down by Central Govt. / Government of National Capital Territory ( NCT ) of Delhi, for motive power and for all other purposes for which electrical energy can be employed.
- (b) To generate, transmit, supply and sell power to the Government of NCT of Delhi / Central Government / Other State Governments including utilities promoted by any such Government(s), Power trading companies, Industries including any project promoted by this company or to any other consumers of Electricity and also for captive consumption, either directly or through transmission lines and facilities of Central Government / Government of NCT of Delhi / Other State Governments / Electricity Boards / Municipal bodies or any other entities whether in Public or in Private Sector.
2. To investigate, prepare feasibility and detailed project reports, design, research , construct, establish, operate and maintain, manage, Renovate & Modernise Power Stations including Boiler Houses, Steam Turbines, Switch Yards, Transformer Yards, Sub-stations, Transmission Lines, Workshops and all such works necessary for Generation, Supply and sale of Electricity. To Construct, Lay down, Establish, Fix, Erect, Equip and Maintain Power Generating Machinery and all other types of Plant and Machinery, Electrical Equipment and Cables, Computer and Control Equipment, Transmission Lines, Fittings and Apparatus in the capacity of Principals, Contractors or otherwise.
3. To coordinate the activities of its subsidiaries, to determine their economic and financial objective/targets and to review, control, guide and direct their performance with a view to secure optimum utilisation of all resources placed at their disposal.

4. To act as an agent of Government of NCT of Delhi / State Financial Institutions and Public Financial Institutions, to exercise all the rights and powers exercisable at any meeting of any company engaged in the planning, investigation, research, design and preparations of preliminary feasibility reports and detailed Project reports, construction, generation, operation and maintenance, Renovation & Modernisation of power stations and projects, transmission, distribution and sale of power generated in respect of any share held by the Government of NCT of Delhi, public financial institutions, nationalised banks, nationalised insurance companies with a view to secure the most effective utilisation of the financial investments and loans in such companies and the most efficient development of the concerned industries.
5. To carry on the business of purchasing, selling, importing, exporting, producing, trading, manufacturing or otherwise dealing in all aspects of planning, investigation, research, design and preparation of preliminary, feasibility and detailed project reports, construction, generation, operation & maintenance, Renovation & Modernisation of Power Stations and Projects, Transmission, distribution, sale of Thermal / Hydel power and power generated through Non-Conventional Renewable Energy Sources, power project development including backward integration and to develop and deal in all kinds of fuels that may be used for the generation of electricity (e.g. Coal, LNG , Naptha, Diesel oil, Furnace oil, Syngas, Orimulsion, Lignite, Coal-bed Methane etc.) in all its aspects.
6. To purchase, acquire, sell, take or give on lease or in exchange or under amalgamation, licence or concession or otherwise, absolutely or conditionally, solely or jointly with others and make, construct, maintain, work, hire, own, hold, improve, alter, manage, let, sell, dispose off or exchange lands, buildings, works, factories, workshops, warehouses, machinery and apparatus, water rights, way leaves, trade marks, patents and designs, privileges or rights of any description or kind in connection with generation or transmission of Power .

IPGCL-PPCL





- DGM  
(Opn.)
- DGM  
(Mech)
- DGM  
(Chem.)
- DGM  
(Elect &  
C&I)
- DGM  
(Elect&  
C&I)
- DGM  
(Mech)
- DGM  
(Chem.)
- DGM  
(Opn)
- DGM  
(Mech.)
- DGM  
(Elect.)
- DGM  
(Opn.)
- DGM  
(Elect.)
- DGM  
(Mech)
- DGM  
(Cher)